



269 Tulla Street North Albury NSW

3 1 1

When a home with endless opportunities presents itself, they will never last long. If you are looking for a property that you would like to put your own stamp on, look no further. This family home is situated on a corner allotment of 671m² (approx.) with secure fencing and a single lock up garage. It would suit first home buyers, renovators, and investors alike, looking to enter the market.

Located in North Albury within proximity to schools, sporting ovals, shopping centres, parks, transport, and eateries.

Features include;

3 bedrooms
2 bedrooms with BIR
Formal lounge room

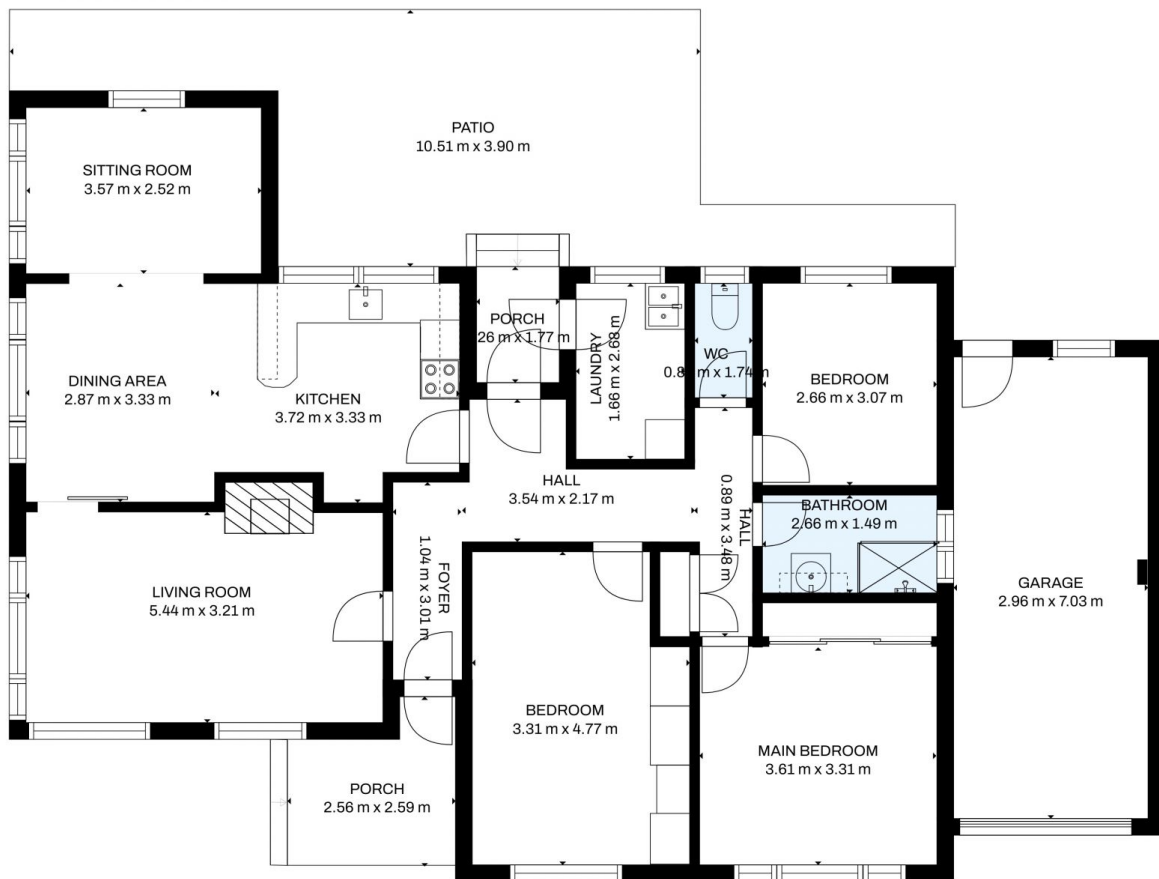
Land Size : 671 sqm
View : <https://www.kanerealestate.com.au/sale/nsw/murray-region/north-albury/residential/house/7234568>



Andrew Kane
0260400224



Cameron Brooks
0260400224



Total scanned area: 193 m²

MEASUREMENTS ARE CALCULATED BY CUBICASA TECHNOLOGY. DEEMED HIGHLY RELIABLE BUT NOT GUARANTEED.