



### 549 Hanel Street East Albury NSW

2 1

Situated on a spacious allotment of 919m<sup>2</sup> (approx.) in a sought-after East Albury location, the potential for the use of this allotment is endless (STCA). Currently the property has a red brick, 2-bedroom, 1 bathroom home situated on it but the potential to develop this spacious allotment into an amazing investment opportunity or to renovate the existing property is unlimited (STCA). Properties like this do not last long in this area.

Situated in a popular East Albury location, within proximity to primary & high schools, restaurants, pubs, supermarket, Albury Base Hospital, and a short walk to the Albury CBD with easy access to the freeway.

EXPRESSIONS OF INTEREST - Closes 12pm Friday 14 October, 2022

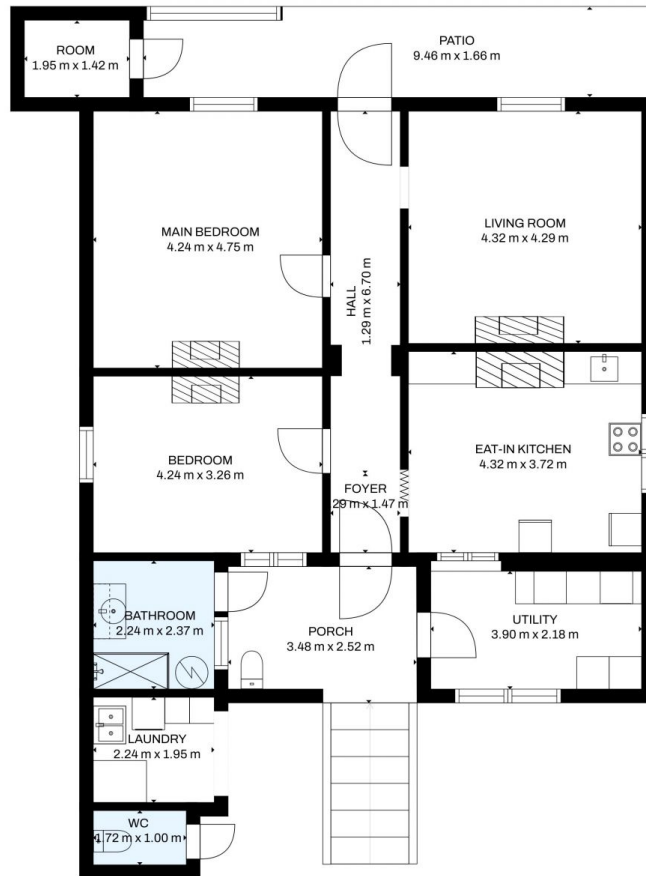
**Land Size** : 919 sqm  
**View** : <https://www.kanerealestate.com.au/sale/nsw/murray-region/east-albury/residential/house/7209382>



**Cameron Brooks**  
0260400224



**Andrew Kane**  
0260400224



Total scanned area: 147 m<sup>2</sup>

SIZES AND DIMENSIONS ARE APPROXIMATE, ACTUAL MAY VARY.