



9 Purtell Street Morven NSW

4 2 2

This is a rare opportunity to purchase a beautifully presented family home on a large allotment situated on two titles. The property is on a spacious 4,050m² (approx.) and includes a quality family home and a 20m x 7m (approx.) shed with power in a quiet country township.

With light filled open plan living spaces within the family home and plenty of space on the allotment to enjoy with family and friends, this is a wonderful opportunity to purchase a rare property within this area, with all the work completed for you to move in and enjoy, yet plenty of potential to make the property your own.

This property is being sold as one property on 2 titles;

9 Purtell Street, Morven - House and Land 2,027m² (approx.)

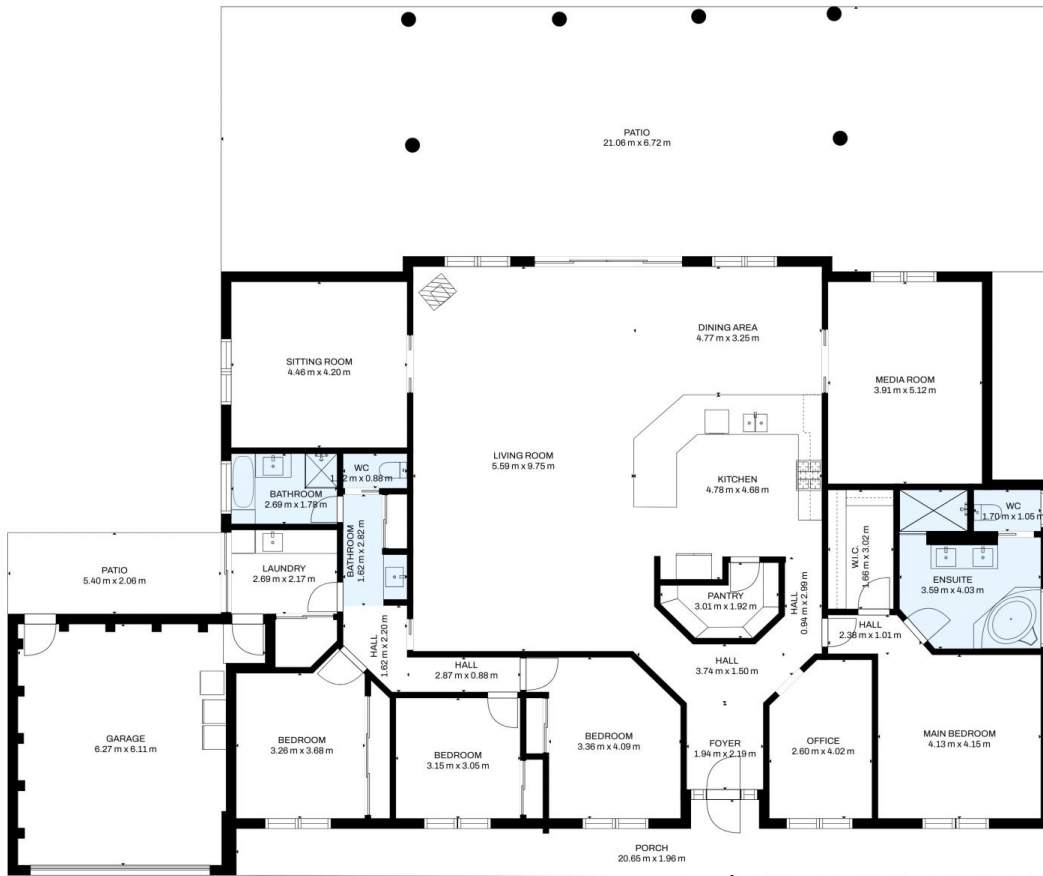
Land Size : 4050 sqm
View : <https://www.kanerealestate.com.au/sale/nsw/riverina/morven/residential/house/7186450>



Andrew Kane
0260400224



Cameron Brooks
0260400224



Total scanned area: 503 m²

SIZES AND DIMENSIONS ARE APPROXIMATE, ACTUAL MAY VARY.