



### 392 Poplar Drive Lavington NSW

5 3 2

This exceptional property is situated in a desirable area and includes 3 levels of living with an exceptional entertainer's backyard. Situated on an allotment of 838m2 (approx.), this property is a unique space that will be a perfect family home for those who love to entertain and would love a property that stands out in the street.

The entertainer's backyard includes an amazing pool house with a sauna, separate shower, toilet, split system A/C and an inground saltwater pool, all the attributes that you will want for your family and friends to enjoy. You really need to see this amazing property to appreciate what it presents.

Situated in Lavington in a popular, established location, in proximity to shops, schools, eateries and parkland at the rear.

**Land Size** : 838 sqm  
**View** : <https://www.kanerealestate.com.au/sale/nsw/murray-region/lavington/residential/house/7077116>

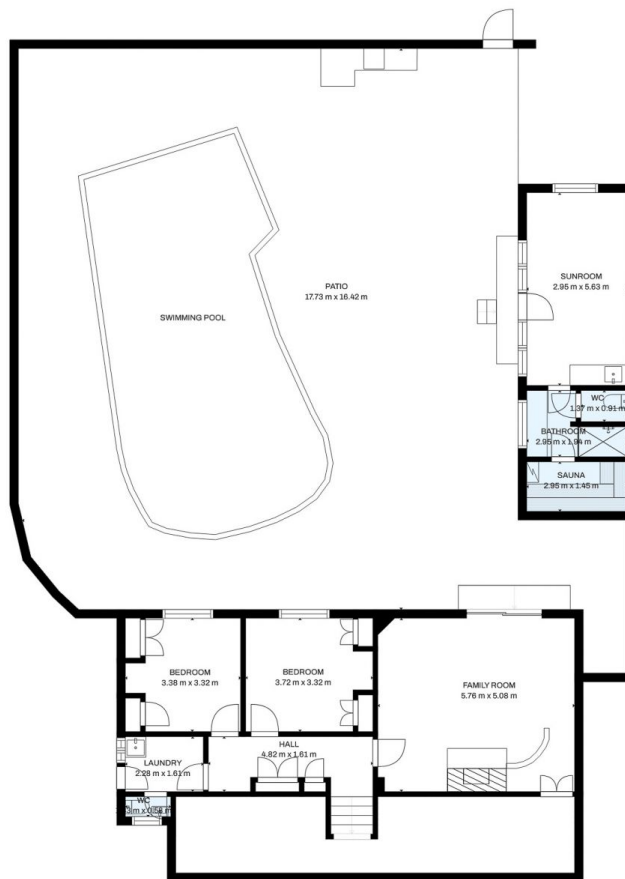


**Andrew Kane**  
0260400224



**Cameron Brooks**  
0260400224





#### Estimated areas

GLA FLOOR 1: 0 m<sup>2</sup>, excluded 528 m<sup>2</sup>  
 GLA FLOOR 2: 148 m<sup>2</sup>, excluded 101 m<sup>2</sup>  
 Total GLA 148 m<sup>2</sup>, total scanned area 777 m<sup>2</sup>

SIZES AND DIMENSIONS ARE APPROXIMATE, ACTUAL MAY VARY.