



551 Schubach Street East Albury NSW

4 2 2

Located in a prime position in old East Albury on a spacious allotment of 1,008m2 (approx.) is this classic weatherboard, 4-bedroom, 2-bathroom family home with plenty of character. Upon entering this property, you will see it has unlimited opportunities to make it your own.

This is a rare opportunity to buy in this location on an allotment of this size. A property like this has so much potential with a spacious back yard and rear lane access. Whether you are looking for your next investment or are after a home to renovate for your family, this family home is a must to inspect.

Situated in a prime old East Albury location, within proximity to primary & high schools, restaurants, pubs, IGA supermarket, Albury Base Hospital, and a short walk to the Albury CBD with easy access to the freeway.

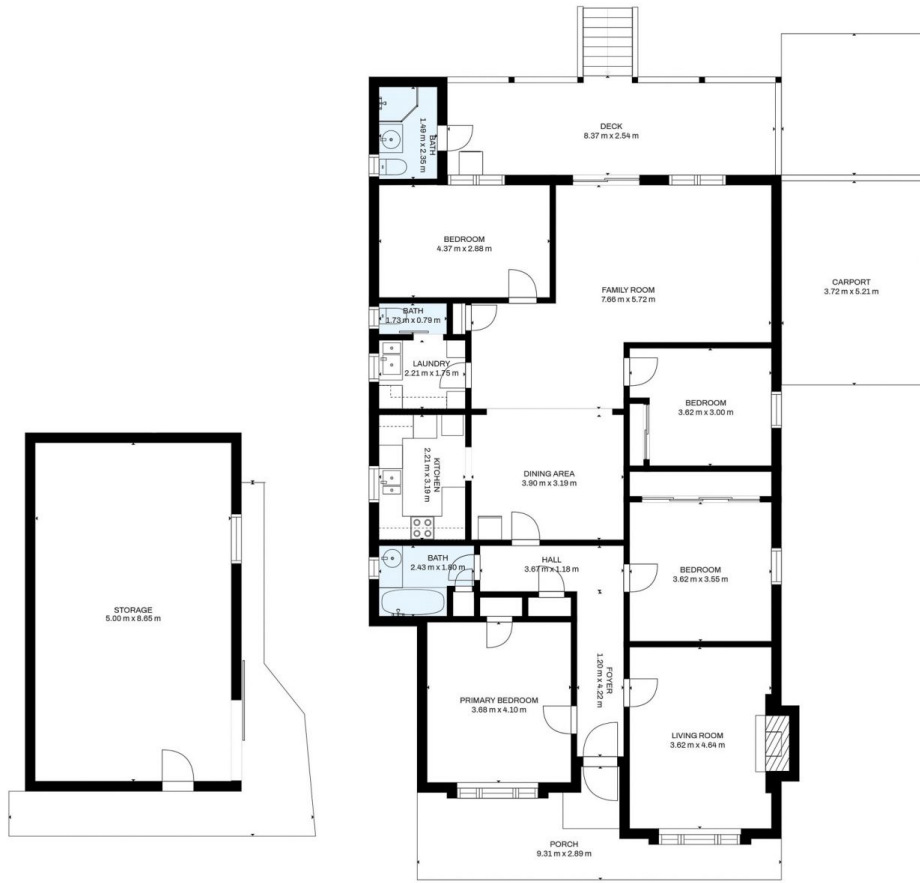
Price : \$ 710,000
Land Size : 1008 sqm
View : <https://www.kanerealestate.com.au/sale/nsw/murray-region/east-albury/residential/house/6729317>



Andrew Kane
0260400224



Cameron Brooks
0260400224



SIZES AND DIMENSIONS ARE APPROXIMATE, ACTUAL MAY VARY.